



*Service, Quality,*

**TECHNICAL REVIEW TEAM (TRT) COMMITTEE  
MEETING AGENDA  
November 16, 2017 – 9:00 AM**

**CITY OF BIG BEAR LAKE,  
DEPARTMENT OF WATER AND POWER  
41972 GARSTIN DRIVE  
BIG BEAR LAKE, CALIFORNIA 92315  
WWW.BBLDWP.COM**

**TRT COMMITTEE MEMBERS**

Don Smith, Board Chair  
Craig Hjorth, Board Treasurer  
Reggie Lamson, General Manager  
Dani McGee, Administrative Manager  
Steve Wilson, Water Superintendent  
Jason Hall, Production Supervisor  
Sierra Orr, Water Conservation and Public Information Supervisor  
Tom Harder, Thomas Harder & Co. Ground Water Consulting

**OPEN SESSION**

**CALL MEETING TO ORDER**

**PUBLIC FORUM**

**1. DISCUSSION/ACTION ITEMS**

**Groundwater Supply and Current Aquifer Water Level Review**

- A. Groundwater Production History
- B. Review Hydrographs

**Ground Water Related Management Decisions**

- A. Governor's Drought Declaration
- B. Stressing Hydrologic Subunits
- C. Groundwater Sustainability Agency Update

**Other Discussion Topics**

- A. State Basin Designation
- B. Conservation Policies
- C. Other Discussion Topics

**ADJOURNMENT**

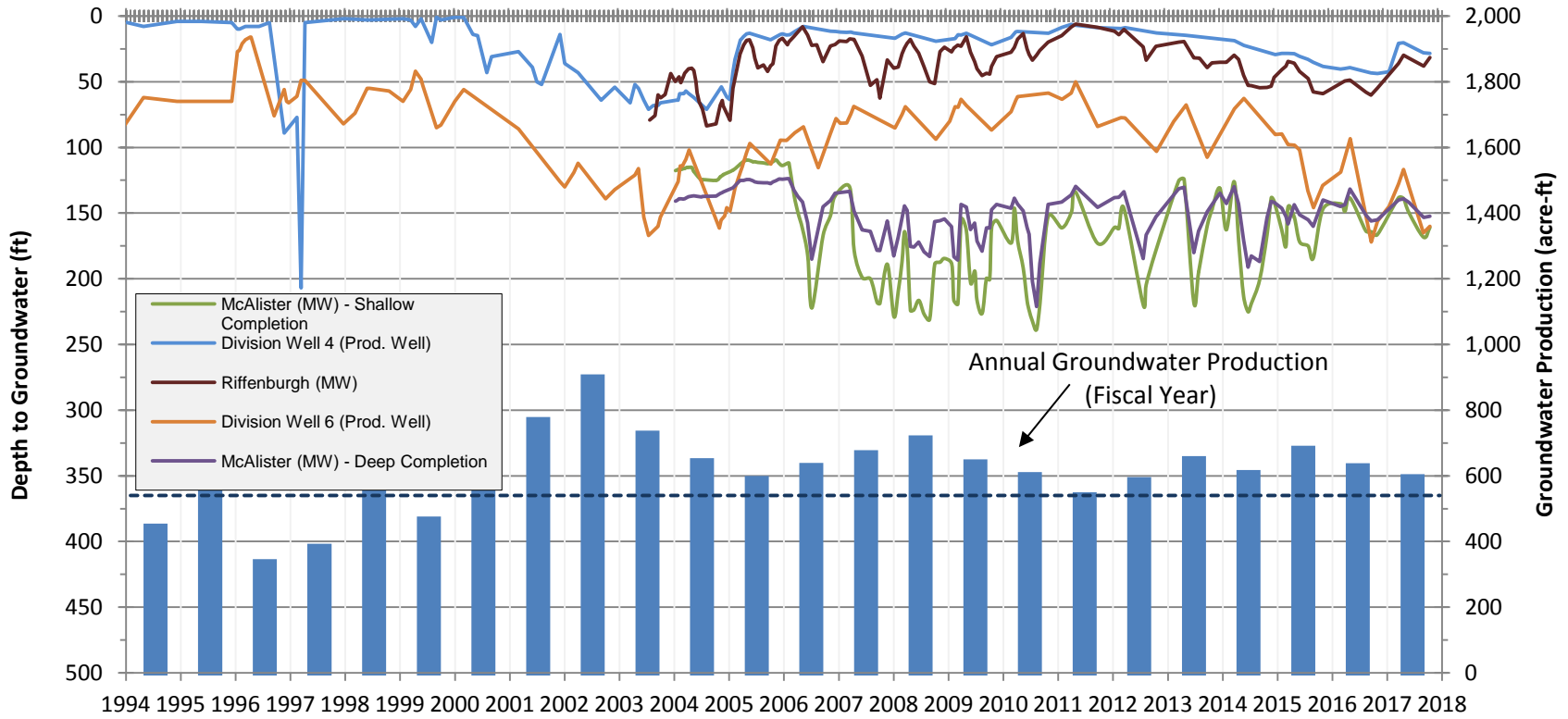
I hereby certify under penalty of perjury, under the laws of the State of California that the foregoing agenda was posted in accordance with the applicable legal requirements. Dated this 9<sup>th</sup> day of November, 2017.

A handwritten signature in black ink, appearing to read "J. Roberts", is enclosed in a rectangular box.

---

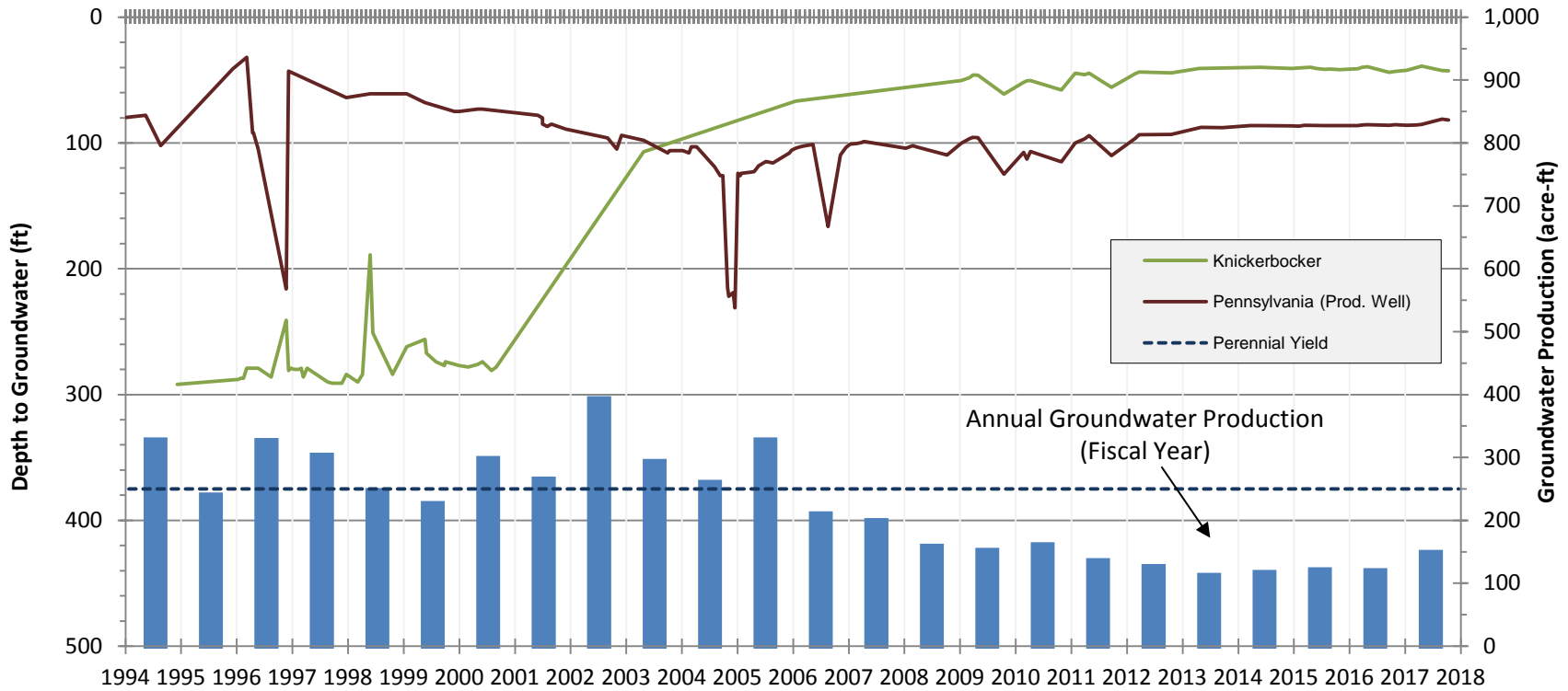
Jack Roberts, Secretary  
DWP Board of Commissioners

**Division / North Shore Hydrologic Subunits  
Depth to Groundwater vs. Groundwater Production**



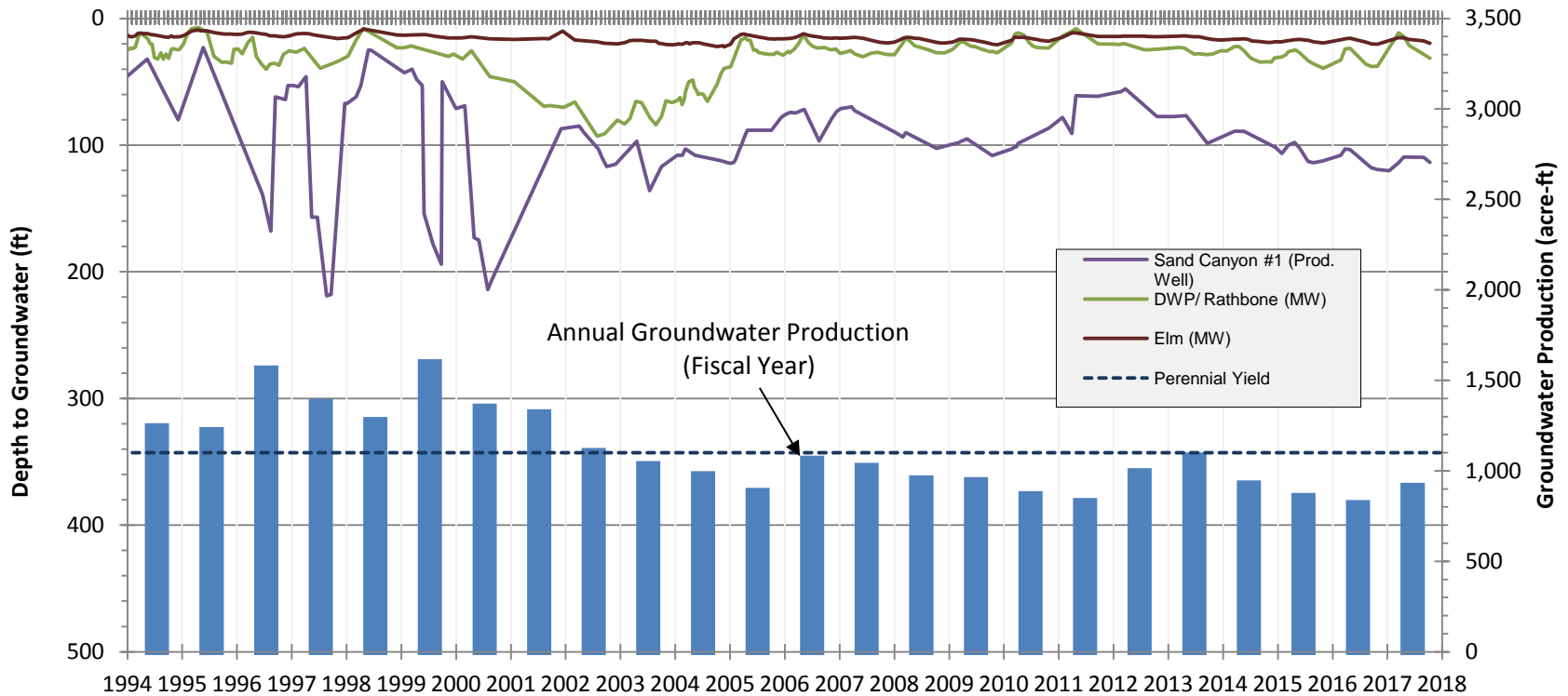
## Village Hydrologic Subunit

### Depth to Groundwater vs. Groundwater Production



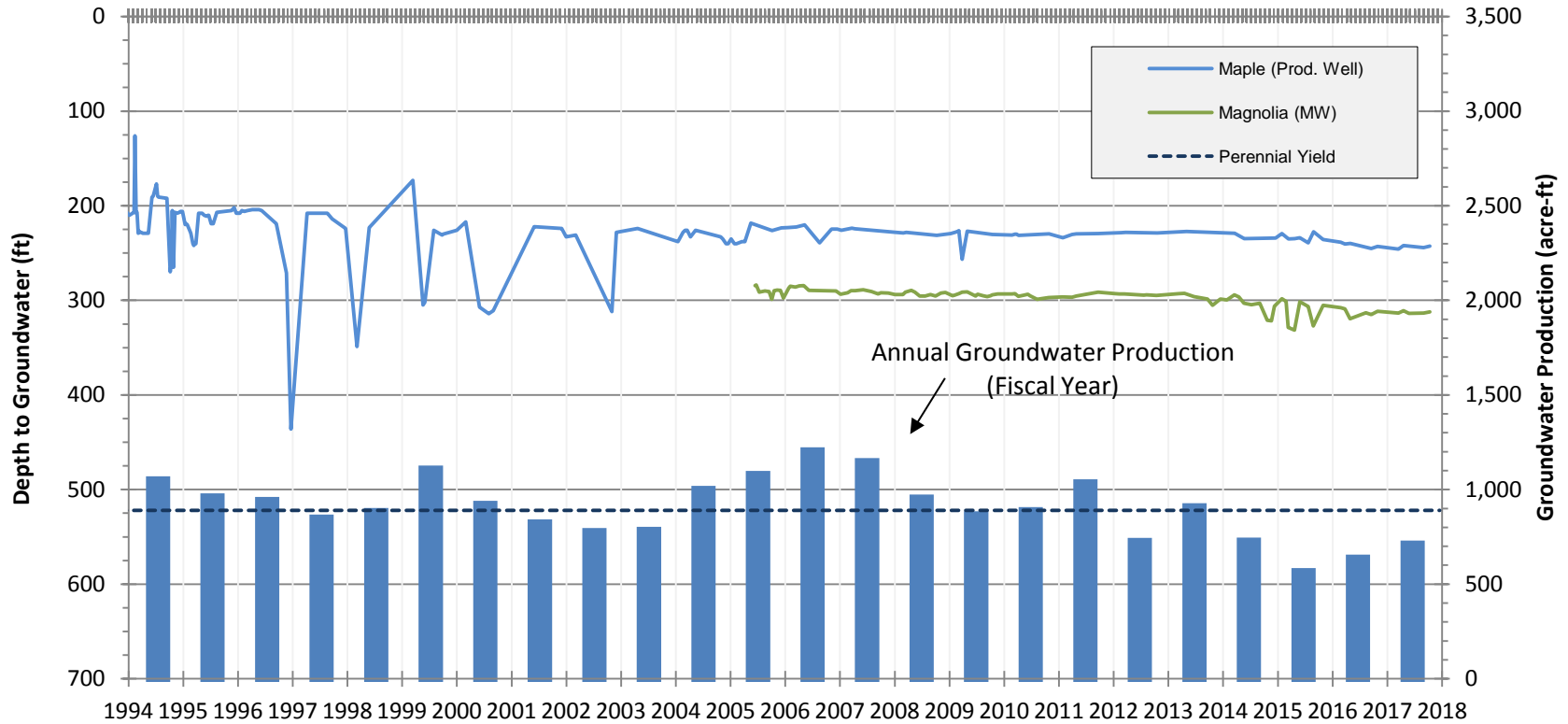
## Rathbone Hydrologic Subunit

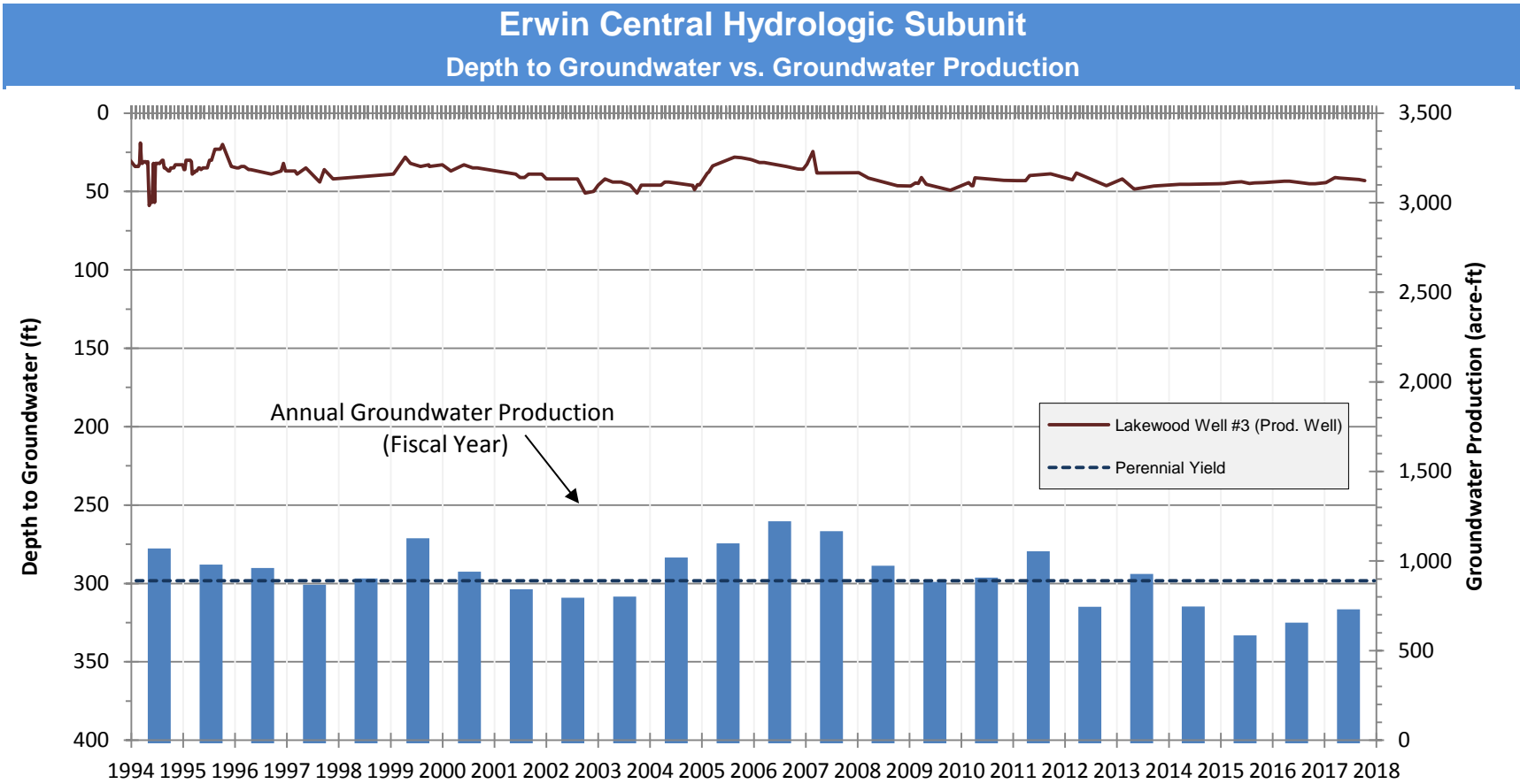
### Depth to Groundwater vs. Groundwater Production



## Erwin West Hydrologic Subunit

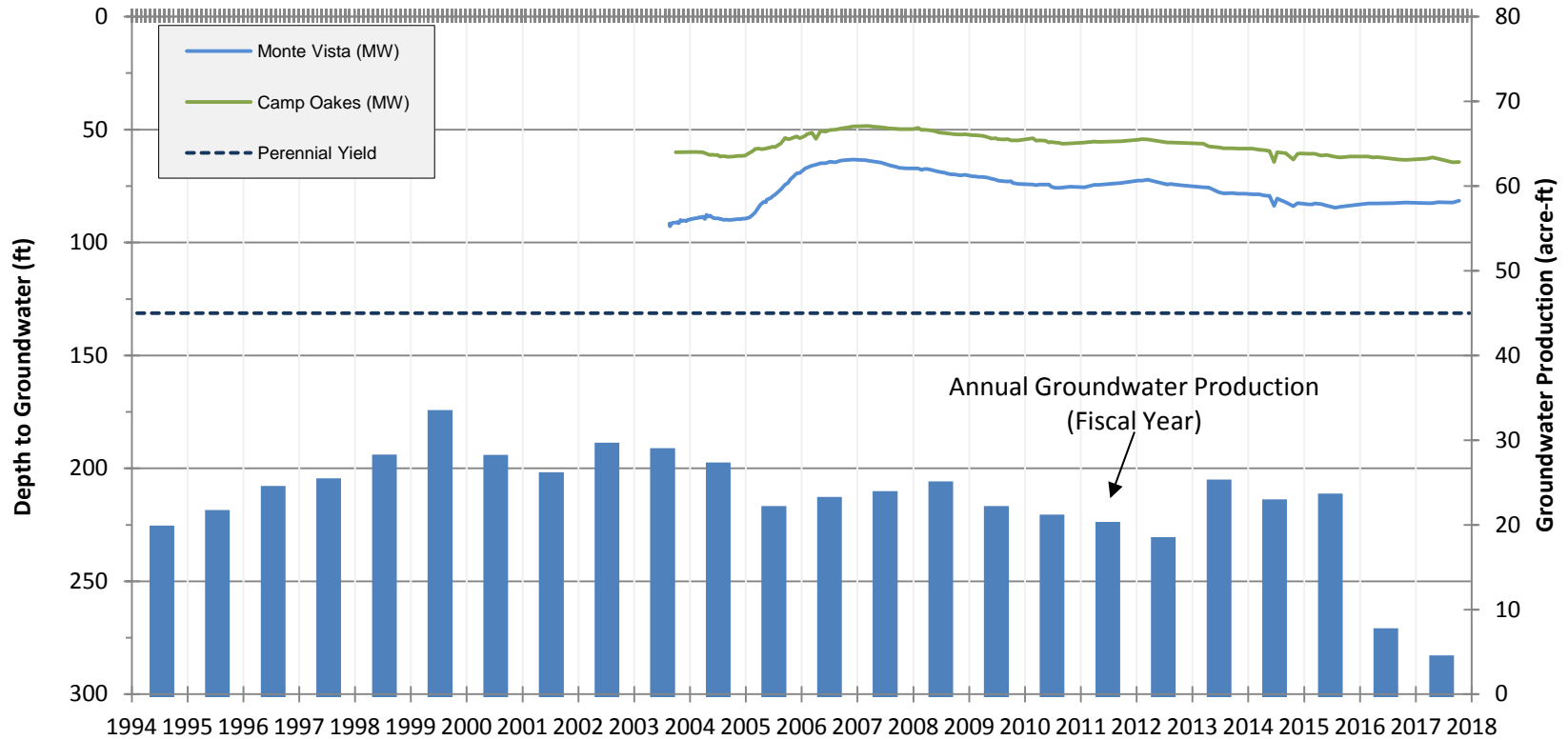
### Depth to Groundwater vs. Groundwater Production



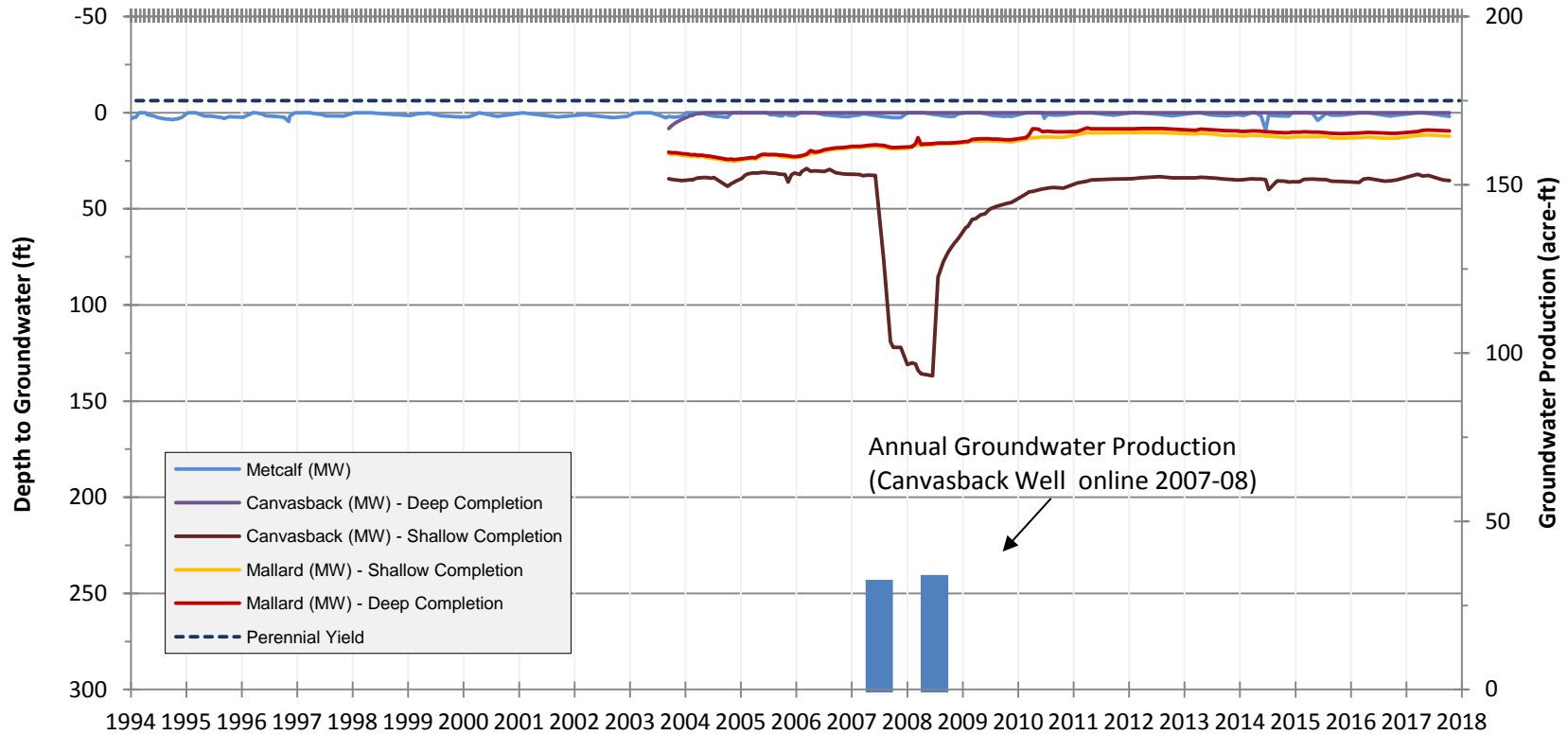


## Erwin East - Lake William Hydrologic Subunit

### Depth to Groundwater vs. Groundwater Production



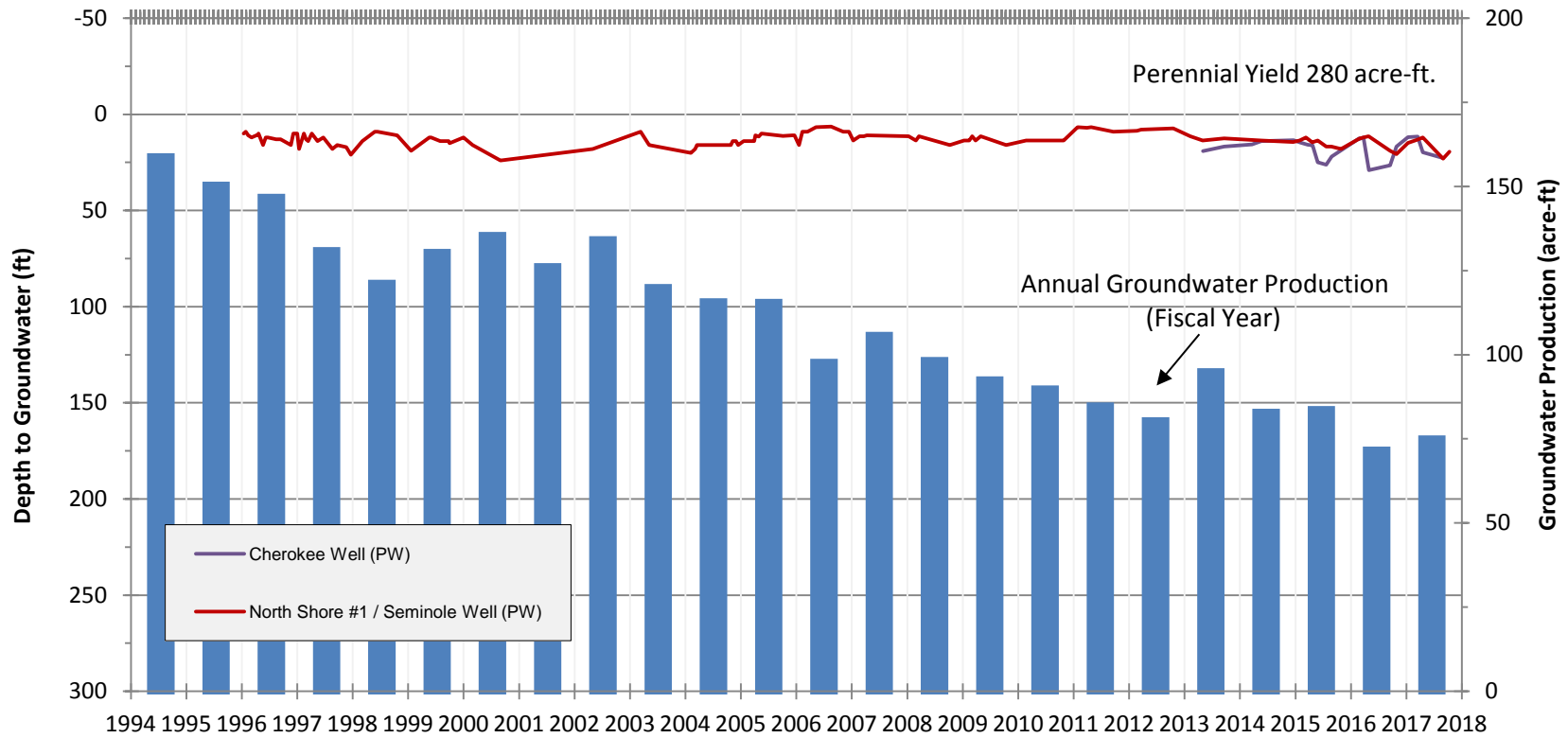
### Mill Creek Hydrologic Subunit Depth to Groundwater vs. Groundwater Production





## Grout Creek Hydrologic Subunit

### Depth to Groundwater vs. Groundwater Production



## City of Big Bear Lake Department of Water and Power

# Maximum Perennial Yield vs. Yearly Production

(maximum perennial yield based on Geoscience 2006 subunit report in acre feet)

Measured in Acre feet - Calendar Year

SUBUNIT	2001	2002	2003	2004	2005	2006	2007	2008	2009	2010	2011	2012	2013	2014	2015	2016	2017	
<b>Mill Creek</b> max yield - 175 AF	0.0	0.0	0.0	0.0	0.0	0.0	29.2	30.7	0.0	0.0	0.0	0.0	0.0	0.0	0.0	0.0	0.0	
<b>Grout Creek</b> max yield - 280 AF	126.0	124.8	116.9	104.1	108.5	95.9	106.5	93.1	88.9	84.2	78.8	81.3	92.1	79.3	81.4	70.4	63.8	
<b>Village</b> max yield - 250 AF	285.1	354.1	252.8	273.6	268.6	187.4	167.2	134.7	152.0	142.5	111.5	78.4	57.0	110.4	108.0	128.6	158.4	
<b>North Shore</b> max yield - 240 AF	18.1	17.1	19.0	14.4	15.1	18.2	20.1	20.3	19.8	18.7	17.8	18.3	21.4	18.3	16.7	14.7	17.5	
<b>Rathbone</b> max yield - 1100 AF	1156.7	1011.9	944.8	840.2	967.6	970.4	947.1	914.3	877.2	787.1	931.9	932.9	994.5	858.8	853.8	769.6	870.9	
<b>West Baldwin (CSD)</b> max yield - 500-1000 AF	806.7	940.9	637.0	892.1	214.7	278.0	647.2	741.7	585.6	391.4	238.3	423.5	548.2	839.4	699.5	715.1	474.5	
<b>Division / No. Shore</b> max yield - 540 AF	859.2	746.9	627.6	653.2	548.0	616.7	721.1	614.0	610.6	544.0	502.6	618.3	612.3	635.7	658.0	604.7	445.3	
<b>Erwin</b>	<b>CSD</b>	253.4	163.5	185.4	191.5	629.2	562.3	349.2	209.5	216.5	370.5	482.3	303.8	225.3	63.6	51.9	92.7	180.3
	<b>DWP</b>	529.7	615.1	614.6	716.0	542.8	584.8	648.5	617.5	567.7	576.9	519.8	486.1	535.6	367.8	474.6	575.1	391.4
	max yield - 890 AF	783.1	778.6	800.0	907.5	1172.0	1147.1	997.7	827.0	784.2	947.4	1002.1	789.9	760.9	431.4	526.5	667.7	571.8

2017 is through October 31st.

# BBLDWP Water Use

	January	February	March	April	May	June	July	August	September	October	November	December	CY Prod Total	SWRCB TOTAL
<b>2013</b>	72.06	51.90	44.23	51.23	76.62	88.44	93.98	87.67	74.60	50.70	38.89	59.68	790.00	790.00
<b>2014</b>	45.48	39.80	39.89	45.69	63.69	83.60	92.33	81.17	74.36	63.56	44.02	48.26	721.85	572.58
<b>2015</b>	56.34	41.66	42.46	45.33	59.85	64.75	74.73	76.31	65.21	57.02	43.83	52.31	679.80	1138.47
<b>2016</b>	66.4	51.63	39.74	35.48	54.75	73.38	90.11	76.59	68.56	55.8	40.85	51.02	704.31	1766.78
<b>2017</b>	58.84	48.58	42.69	45.67	62.05	76.42	86.24	86.34	63.51	57.97			628.31	

	January	February	March	April	May	June	July	August	September	October	November	December	Calendar Year Average change	SWRCB Total Avg Change
Change from 2013 to 2015 for the same month	-21.82%	-19.73%	-4.00%	-11.52%	-21.89%	-26.79%	-20.48%	-12.96%	-12.59%	12.47%	12.70%	-12.35%	-11.58%	<b>-10.56%</b>
Change from 2013 to 2016 for the same month	-7.85%	-0.52%	-10.15%	-30.74%	-28.54%	-17.03%	-4.12%	-12.64%	-8.10%	10.06%	5.04%	-14.51%	-9.93%	
Change from 2013 to 2017 for the same month	-18.35%	-6.40%	-3.48%	-10.85%	-19.02%	-13.59%	-8.24%	-1.52%	-14.87%	14.34%			-8.20%	

## Residential Gallons Per-Capita Day (RGPCD)

	January	February	March	April	May	June	July	August	September	October	November	December	Avg (dates shown)
<b>2013</b>	63.42	58.71	45.18	52.5	65.7	81.6	87	85.9	78.6	50.6	43.8	58.23	67.10
<b>2014</b>	40.4	46.6	34.8	43.5	57.10	76.91	85.22	79.26	78.11	63.19	49.41	46.96	58.46
<b>2015</b>	49.92	48.61	36.93	43.09	53.51	59.5	68.5	73.25	65.61	57.84	42.82	48.38	54.00
<b>2016</b>	58.45	56.5	37.75	32.71	48.18	69.77	83.2	70.05	67.32	55.42	42.82	48.38	55.88
<b>2017</b>	50.25	50.15	42.04	45.67	57.33	63.98	86.24	81.37	61.05	57.91			59.60

